

January  
2026

# Addi's Two Cents Treasurer Report

CONTACT ME ANYTIME! (FOR LITERALLY ANYTHING)

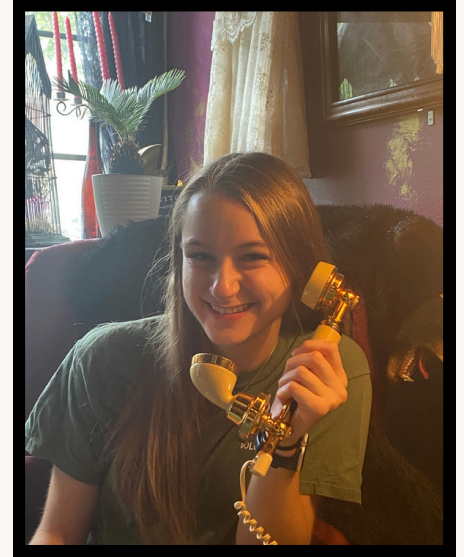
EMAIL: [ADDI@KTKEY.ORG](mailto:ADDI@KTKEY.ORG)

INSTAGRAM: @KTKEYCLUBTREASURER



## Hello again K-T!

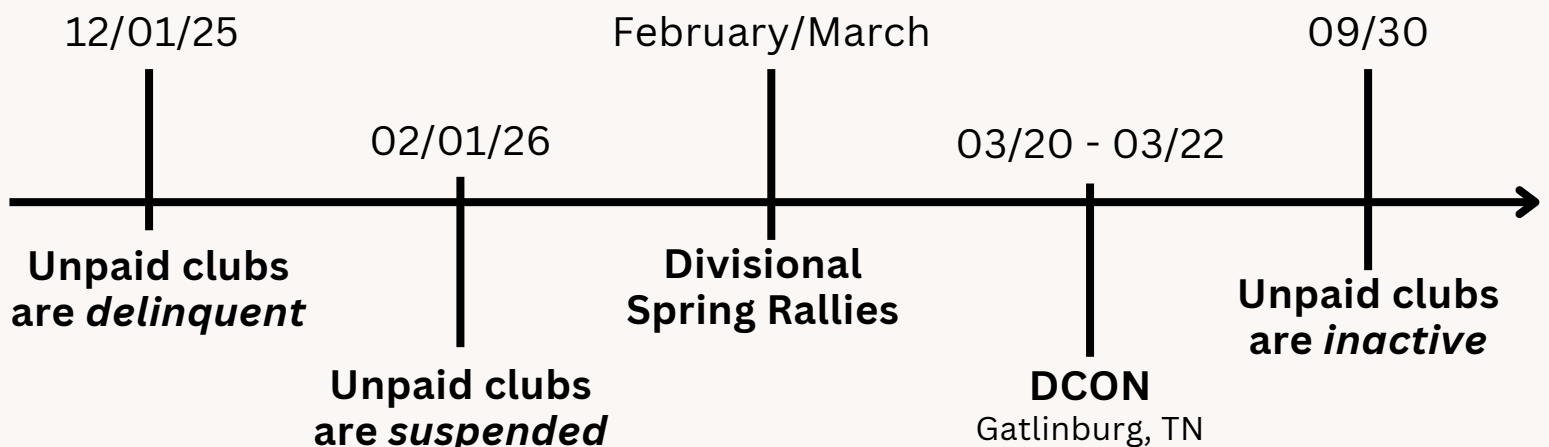
It's Addi Rice, K-T District Treasurer, back with another newsletter! As the weather grows cold, I've been trying to keep warm with service lately, volunteering at the American Red Cross and Kindness Warrior Walk here in Louisville, KY. My best wishes go out to all Seniors currently applying for college - I know your pain - but here's something to brighten your day: DUES PAYMENT! Stay tuned for info on Key Club's new platform, Kiwanis Engage, and other fun updates from your District Board.



### Report Itinerary

- HOW TO PAY DUES
- Club Status Review
- Fall Rally Recap
- Winter Board Recap
- Fundraising

### What's up next?



---

# *How do I PAY DUES?*

**WE NOW USE**

**KIWANIS ENGAGE,**

**A NEW AND IMPROVED KEY CLUB MEMBERSHIP PLATFORM!**

---

**GETTING STARTED:  
FOR THOSE ALREADY  
ON RECORD AS THE  
KEY CLUB ADVISOR**



Go to <https://keyclub.org/dues-reporting>  
A link to Kiwanis Engage is at the bottom of the  
page; the page has clear instructions with videos on  
how to log in!

If this is your first time on Kiwanis Engage, select  
“Forgot Password?” and enter the email associated  
with your Key Club advisor status. Use this email to  
create your password and log in.

Email [kira@ktkey.org](mailto:kira@ktkey.org) with your name and email  
address to become your Key Club’s official advisor on  
record.

**Now you can follow the steps above!**

**GETTING STARTED:  
FOR NEW,  
UNREGISTERED  
CLUB ADVISORS**



**SUBMIT YOUR DUES**



Follow the instructions at the bottom of the page  
at <https://keyclub.org/dues-reporting>:  
**Log in to Kiwanis Engage, update your roster, and  
print your invoice.**

Submit payment online through Kiwanis Engage OR  
print invoice and mail with check to:

Kiwanis International  
P.O. Box 6069, Dept. 112  
Indianapolis, IN 46206

**PRO TIP!**



**When updating your roster, input your Club Officers and their  
information into the LEADERSHIP ROLES and encourage them  
to sign up for Kiwanis Engage the same way you did! This will  
allow them access to the platform so they can aid with roster  
updates.**

---

*We understand that it is a transition between our old platform to  
Kiwanis Engage; if you need assistance, please reach out to me at  
[addi@ktkey.org](mailto:addi@ktkey.org) and I will redirect you based on the help you need.*

---

# *Club status review!*

WHAT DOES IT MEAN TO BE

**ACTIVE?**

Your club is paid for the year and in good standing!

Your club didn't submit dues by December 1st  
Take action to pay for your club!

WHAT DOES IT MEAN TO BE

**DELINQUENT?**

WHAT DOES IT MEAN TO BE

**SUSPENDED?**

Your club didn't submit dues by February 1st  
Take action to pay for your club!

Your club didn't submit dues by September 30th  
*Reactivation* is necessary to be a Key Club again.

WHAT DOES IT MEAN TO BE

**INACTIVE?**

WHAT DOES IT MEAN TO BE

**DECHARTERED?**

Your club didn't *reactivate* for 2 years  
The club needs to be completely rechartered.

---

*So... I can still submit my club's dues?*



**YES!**

*Need help? Email me at  
addi@ktkey.org*

There is still time! If your club has not submitted dues yet, please do so before February 1st and avoid having to *reactivate* completely (which has a \$25 fee). Remember: you only need one member and a faculty advisor to remain a club!



ft. Sunny Trieu,  
Div. 12 LTG!



At Fall Rally, we announced our **DCON theme: Service in the Smokies!** With bears, s'mores, and other cozy memorabilia, this DCON is sure to be a fun one. After the Board spoke to the K-T district, it was time for rollercoasters and cinnamon bread at Dollywood!

---

## *Fall Rally* *October 2025* *Pigeon Forge, TN*



*Division 12 group photo*

---

## *Winter Board Meeting* *November 2025 - Gatlinburg, TN*



*We saw a bear!* 



Your District Board visited our DCON location this Winter to prepare for our exciting 2026 District Convention! While in Gatlinburg, we not only designed some fantastic workshops for you, but also checked out the shops to ensure they're good enough for our lovely K-T District.

---

# Fundraising

## WHY DO WE FUNDRAISE?

### Fundraising can support many initiatives!

Reach out to me for personalized help designing a fundraiser for your Key Club!

- Raise money for a nonprofit or specific cause, ie. UNICEF, RMDH
- Sponsor members/subsidize the cost for your Key Clubbers to attend Fall Rally/DCON
- Club funds can help create events later down the line, ie. Key Club promotional party

## NEW FUNDRAISING IDEAS

*With the support of your Key Club, anything is possible!*

### Key Club member-based: *Chocolate sale!*

- Partner with World's Finest Chocolate to purchase boxes of chocolate bars
- Sell boxes to Key Clubbers, who sell bars to recoup money
- Note: Requires pre-existing funds, but can be majorly profitable!

Restaurant sponsorships are collaborations between a local restaurant/store and your Key Club. You promote going to the store during a given day/time and your Key Club gets 20-30% of the store's profits made from your attendees

Reach out to a local restaurant (email/call/in-person) to ask about a sponsored night

Choose a day and time, then promote going to the store to your Key Club with flyers and posts; spread the word to your entire school to maximize profits!

### Develop community relationships: *Sponsored restaurant night!*

